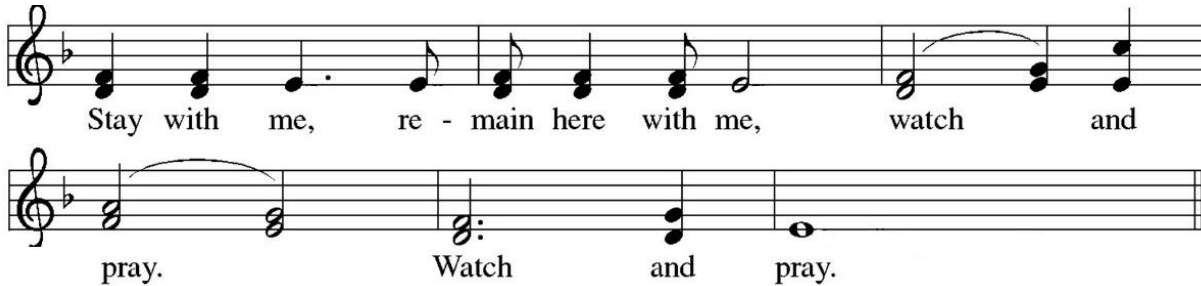


PRELUDE *Spiegel im Spiegel*

Luke Cook, cello – Jacqueline Stilger, piano

WELCOME

Rev. Matt Weiler

SUNG REFRAIN *Stay With Me* Brianna Attard, Luke Cook, Hannah Elandt, Justin Hamann, Jacqueline Stilger


Stay with me, re - main here with me, watch and
pray. Watch and pray.

Music: Jacques Berthier, ©1984 Les Presses de Taizé, admin. By GIA Publications, Inc. Used with permission. OneLicense A-717536

JESUS PRAYS IN GETHSEMANE Matthew 26:36-41**SUNG REFRAIN** *Stay With Me***PRAYERS IN THE NIGHT**

Rev. Julie Kline

JESUS BEFORE THE HIGH PRIEST Matthew 26:57-68

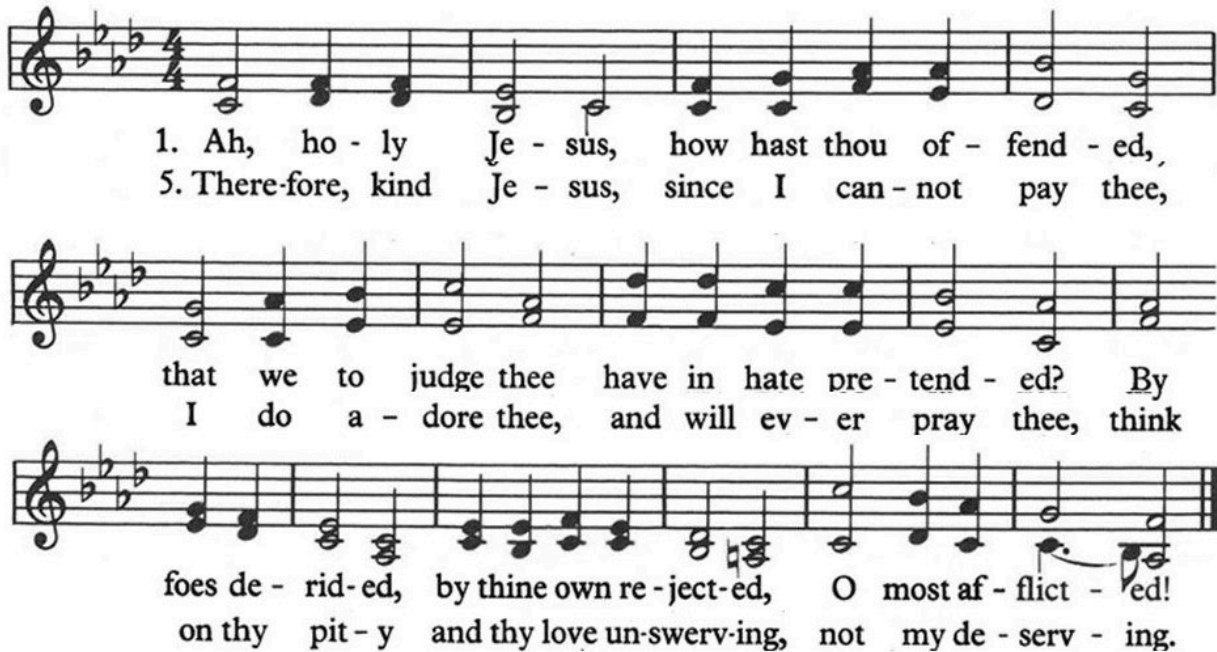
Barbara Toshalis

THE DENIAL OF JESUS Matthew 26:69-75

Jerry Toshalis

HYMN *Ah Holy Jesus* (vs. 1 and 5)

Brianna A., Hannah E., Bernie Foulk, Justin H., Jacqueline Stilger



1. Ah, ho - ly Je - sus, how hast thou of - fend - ed,
5. There-fore, kind Je - sus, since I can - not pay thee,
that we to judge thee have in hate pre - tend - ed? By
I do a - dore thee, and will ev - er pray thee, think
foes de - rid - ed, by thine own re - ject - ed, O most af - flict - ed!
on thy pit - y and thy love un - swerv - ing, not my de - serv - ing.

Words: Johann Heerman, 1630. Music Johann Crüger, 1640.

JESUS IS SENTENCED Matthew 27:15-26

Phil VanOrman

JESUS IS CRUCIFIED Matthew 27:27-43

Rev. Julie Kline

HYMN *O Sacred Head Now Wounded* (vs. 1 and 3)



O Sac - red Head, now wound - ed, with grief and shame weighed down, now scorn - ful - ly sur -
What lan - guage shall I bor - row to thank thee, dear - est friend, for this thy dy - ing



round - ed with thorns, thine on - ly crown: how pale thou art with an - guish, with
sor - row, thy pit - y with - out end? O make me thine for - ev - er; and



sore a - buse and scorn! How does that vis - age lan - guish which once was bright as morn!
should I faint - ing be, Lord, let me nev - er, nev - er out - live my love to thee.

JESUS IS CRUCIFIED Matthew 27:44-54

Deacon Cara Weiler

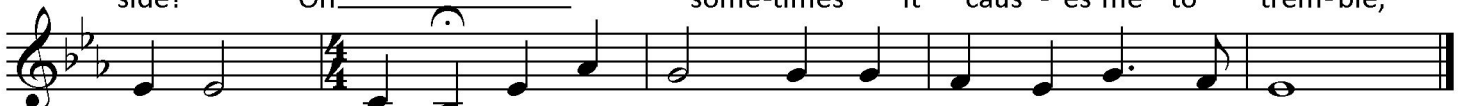
HYMN *Were You There* (vs. 1-3)



Were you there when they cru - ci - fied my Lord? Were you there when they cru - ci - fied my
Were you there when they nailed him to the tree? Were you there when they nailed him to the
Were you there when they pierced him in the side? Were you there when they pierced him in the



Lord? Oh _____ some - times it caus - es me to trem - ble,
tree? Oh _____ some - times it caus - es me to trem - ble,
side? Oh _____ some - times it caus - es me to trem - ble,



trem - ble, trem - ble. Were you there when they cru - ci - fied my Lord?
trem - ble, trem - ble. Were you there when they nailed him to the tree?
trem - ble, trem - ble. Were you there when they pierced him in the side?

Words & Music: Afro-American Spiritual, adapt. And arr. By William Farley Smith, 1986.
© 1989 The United Methodist Publishing House.

THE BURIAL OF JESUS Matthew 27:55-61

Rev. Julie Kline

ANOINTING: BURYING THE PAST

Rev. Matt Weiler

BLESSING

Now go in silence, but not in despair. May the words of Jesus ring in your ears: "I am with you always."
And may the Spirit hover, move, and deliver salve to your soul until we meet again on the Day of
Resurrection. **Amen.**

We are a Reconciling Congregation, welcoming all.

First United Methodist Church of Kalamazoo invites all persons to join us on our journey of faith. Jesus Christ calls us to be an inclusive church that exemplifies the kingdom of God. We strive to move toward reconciling relationships with all, affirming those who are marginalized for any reason, including sexual orientation or gender identity.

We welcome all with *open hearts, open minds, open doors*. www.umc-kzo.org



The staff is here to empower and equip the congregation for ministry and mission. Email staff by entering the first letter of their first name and the entire last name, and then: @umc-kzo.org. (i.e., jkline@umc-kzo.org)

Rev. Julie Kline, *Lead Pastor*

Rev. Matt Weiler, *Pastor of Community Formation*

Bernie Foulk, *Organist*

Jacqueline Stilger, *Director of Music*

Julia Librizzi, *Director of Children & Families Ministries*

Rev. Keith Treman, *Pastor of Congregational Care*

Ruth LaMachia, *Director of Business Administration*